



Newland AIDC
Scanning Made Simple

EasyConnect

**User
Guide**

Revision History

Version	Description	Date
V1.0.0	Initial release.	Jan 19, 2021
V1.0.1	Updated the support firmware version of HR1580-BT and HR5280-BT	Jun 22, 2021
V1.0.2	Updated the support product list	July 4 th ,2022

Table of Content

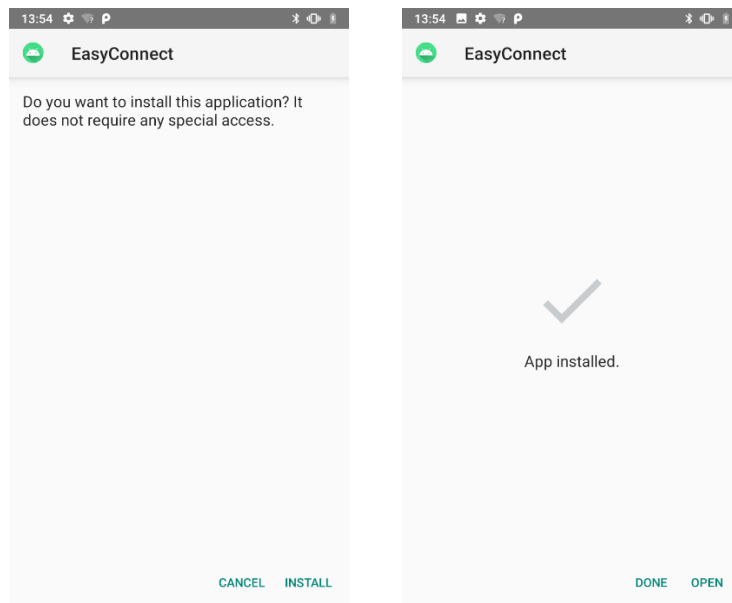
About EasyConnect.....	1
How to Use EasyConnect.....	1
Supported Products.....	3
Supported Operating System of Host.....	3

About EasyConnect

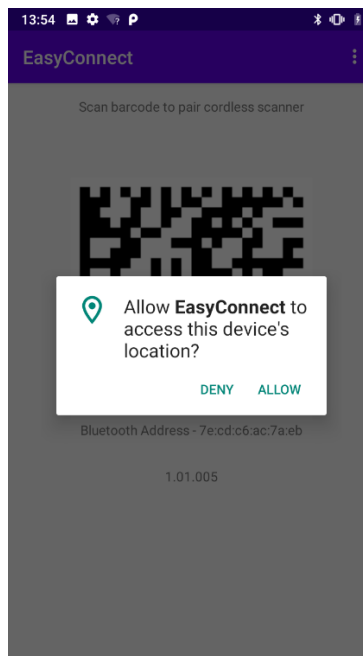
EasyConnect is a connection application developed by Newland Auto-ID Technology Co., Ltd. It can be directly installed on mobile phones, PDAs and other Android mobile devices. The bluetooth scanners can be directly connected to the mobile device by using this application and transmit the data to the Android devices in real time.

How to Use EasyConnect

1. Download [EasyConnect](#) installation package and run it after installation.



2. Allow EasyConnect to access this device's location.



3. Scan the below barcodes to set the scanner in Bluetooth HID mode and clear pairing info on scanner.



@SETUPE1

Enter Setup



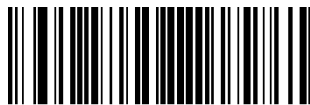
@WLSCLP

Clear Pairing Information of Scanner



@INTERF10

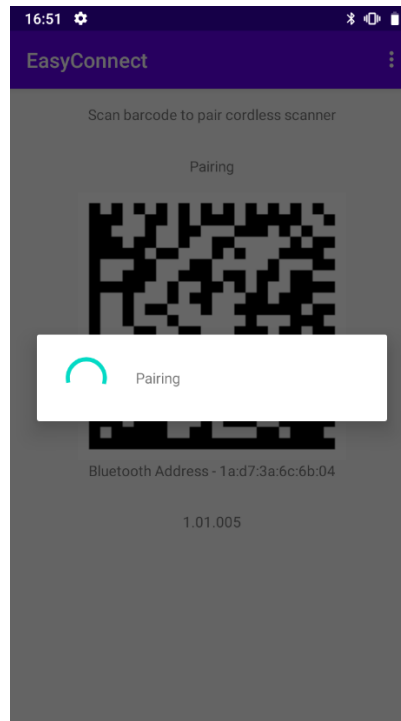
Bluetooth HID Mode



@SETUPE0

Exit Setup

4. Scan the pairing barcode on the EasyConnect and then connection completed.



Once a scanner and an Android device is paired, no repairing is required unless the pairing information is cleaned.

Supported Products

Supported products are listed as below

HR15-BT (Firmware version HR15-BT_V1.01.017 or later is required)

HR22-BT (Firmware version HR22-BT_V1.01.006 or later is required)

HR32-BT (Firmware version HR32-BT_V1.01.021 or later is required)

HR52-BT (Firmware version HR52-BT_V1.02.003 or later is required)

BS30 (Firmware version BS30_V1.02.008 or later is required)

BS50 (Firmware version BS50_V1.02.014 or later is required)

FR42-BT(Firmware version FR42-BT_V1.01.002 or later is required)

Supported Operating System of Host

Android 6 later is required.

Newland AIDC

📍 No.1 Rujiang West Rd., Mawei, Fuzhou, Fujian 350015, China

☎ +86-591-83979500

✉ info@nlscan.com

🌐 www.newlandaidc.com

Asia Pacific**Taiwan:**

Add: 7F-6, No. 268, Liancheng Rd.,
Jhonghe Dist. 235, New Taipei City,
Taiwan

Tel: +886 2 7731 5388

Email: info@nlscan.com

India:

Add: 416 & 417, Tower C, NOIDA ONE
business park, B-8, Sector 62, Noida,
Uttar Pradesh - 201301

Tel: +91 120 3508102

Email: info@nlscan.com

Korea:

Add: Biz. Center Best-one, Jang-eun Medical
Plaza 6F, Bojeong-dong 1261-4, Kihung-gu,
Yongin-City, Kyunggi-do, South Korea

Tel: +82 10 8990 4838

Email: info@nlscan.com

Japan:

Add: Room 407 Area Shinagawa Building
13th Floor, 9-36 Konan 1-chome, Minato-ku,
Tokyo, Japan 108-0075

Tel: +81 03 4405 3222

Email: info@nlscan.com

Europe & Middle East & Africa

Add: Rolweg 25, 4104 AV Culemborg, The Netherlands

Tel: +31 (0) 345 87 00 33

Email: sales@newland-id.com

Tech Support: tech-support@newland-id.com

Web: www.newland-id.com

North America

Add: 46559 Fremont Blvd., Fremont, CA 94538, USA

Tel: +1 510 490 3888

Email: info@nlscan.com

Latin America

Tel: +1 239 598 0068

Email: Info@NewlandLA.com

Chile:

Tel: +56 9 9337 3177

Email: Chile@NewlandLA.com

Brazil:

Tel: +55 35 9767 6078

Email: Info@NewlandLA.com

Colombia:

Tel: +57 319 387 4484

Email: Colombia@NewlandLA.com

Mexico, Central America & Caribbean:

Tel: +52 155 5432 9079

Email: Mexico@NewlandLA.com



Newland AIDC
Scanning Made Simple

